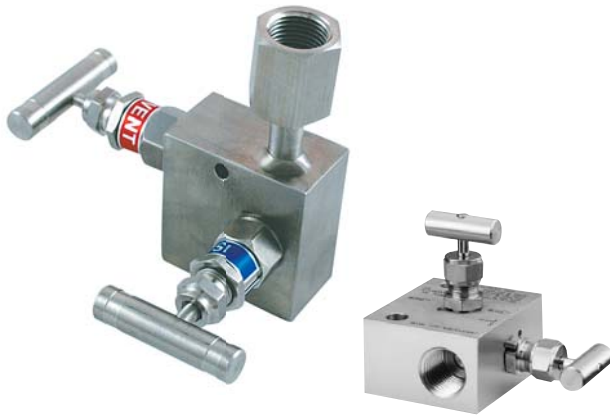
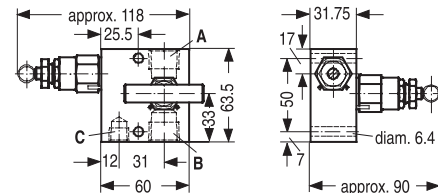


Two Valve Manifolds

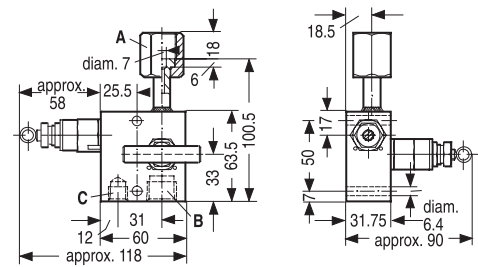
Block Type(R Type)



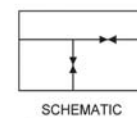
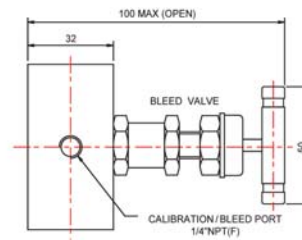
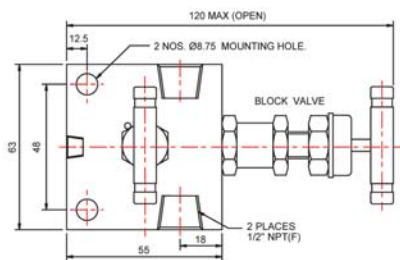
LOCK-FIT two valve calibration manifold provides an economical and convenient method of blocking, bleeding and calibrating pressure instruments. The block type(R type) may be mounted rigidly to a mounting bracket, providing a safe isolation valve and the single flanged type(T Type) is directly mounted while reducing the number of fittings and space required for installation.



- A Connection on device side: 1/2-14 NPT
- B Connection on measurement side: 1/2-14 NPT
- C Vent and test connection: 1/4-18 NPT



- A Connection on device side: nipple to DIN 16 284, G1/2, SW 27
- B Connection on measurement side: 1/2-14 NPT
- C Vent and test connection: 1/4-18 NPT



Single Flange Type(T Type)

