

Pressure Regulator

Pressure Regulator



PR01	PR02	PR03	PR11	PR21	PR31	PR41	PR51
124	126	128	130	132	134	136	138

PR01 SERIES PRESSURE REGULATOR

PR01 series stainless steel pressure regulator has single stage diaphragm pressure reducing structure, pressure delivered by stainless steel diaphragm, constant outlet pressure, suitable for purified gas, standard gas, corrosive gas etc.

Design features:

- * Single stage pressure reducing structure
- * Metal to metal diaphragm seal
- * Body inlet and outlet port: 1/4"NPT Female
- * Easy to clean structure
- * Filter mesh inside
- * Panel mount or wall mount

TYPICAL APPLICATIONS:

Laboratory, Gas Chromatograph, gas laser, gas manifold system, petroleum chemistry, and test equipment

Specifications:

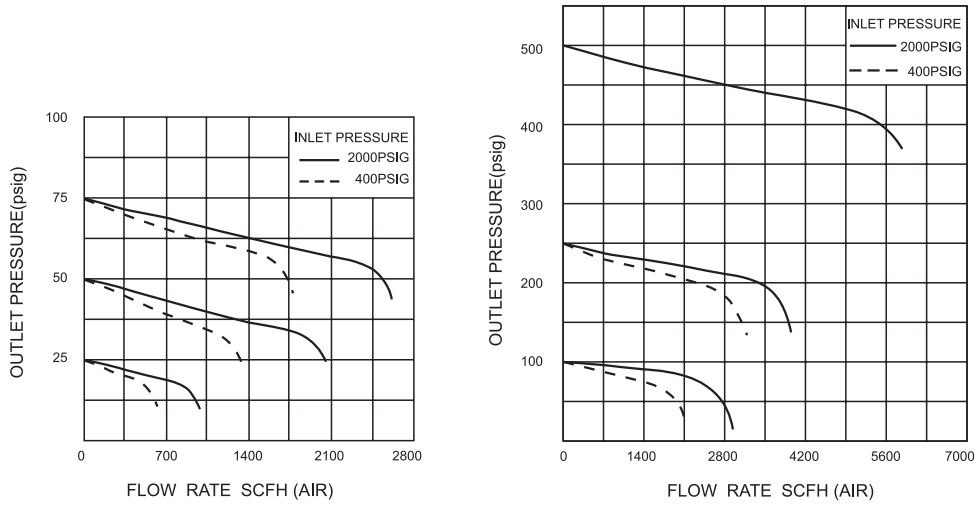
Maximum input pressure: 500, 2200, 3000psi
Output pressure: 0-25, 0-50, 0-100, 0-250, 0-500psi
Proof pressure: 1.5 times of maximum rated pressure
Working temperature: -40 + 165 deg F (-40 +74 deg C)
Inboard leakage: 2×10^{-8} atm cc/sec He
Flow capacity: Cv = 0.08

Material:

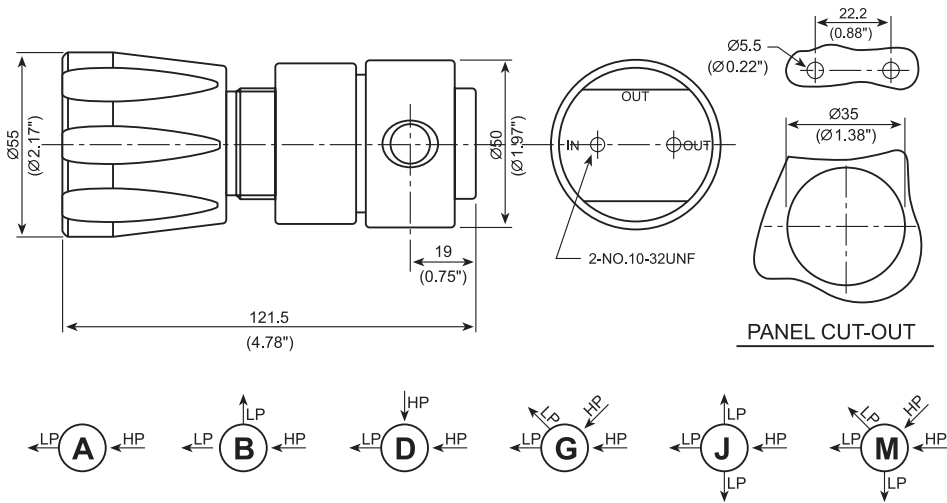
Body: SS 316L, Brass
Cover: SS 316L, Brass
Diaphragm: SS 316L
Filter mesh: SS 316L (10um)
Seat: PCTFE, PTFE
Spring: SS 316L
Poppet: SS 316L
Net weight: 0.9 kgs



FLOW DATA



DIMENSIONS



ORDERING INFORMATION

Series	Body	Port	Input pressure	output pressure	Pressure gauge	Inlet port	Outlet port	Option
PR01	L:316L B:Brass	A B D G J M	D:3000psig E:2200psig F:500psig	F:0~500psig G:0~250psig I:0~100psig K:0~50psig L:0~25psig	M: gauge(Mpa) P: gauge(PSI/bar) N: no gauge	02F:1/4"NPT(F) 02M:1/4"NPT(M) 23:CGA330 24:CGA350 27:CGA580 28:CGA660 30:CGA590 52:G5/8"-RH(F)	02F:1/4"NPT(F) 02M:1/4"NPT(M) 01T:1/8" Ferrule fitting 02T:1/4" Ferrule fitting 03T:3/8" Ferrule fitting 6T:6mm Ferrule fitting 8T:8mm Ferrule fitting	P: Panel mount S: Safety valve N: Needle valve

PR02 SERIES PRESSURE REGULATOR

PR02 series stainless steel pressure regulator has single stage diaphragm pressure reducing structure, pressure delivered by stainless steel diaphragm, constant outlet pressure, suitable for medium flow rate gas system. suitable for purified gas, standard gas, corrosive gas etc.

Design features:

- * Single stage pressure reducing structure
- * Metal to metal diaphragm seal
- * Body inlet port: 1/2"NPT Female and outlet port: 1/4"NPT Female
- * Easy to clean structure
- * Filter mesh inside
- * Panel mount or wall mount

TYPICAL APPLICATIONS:

Laboratory, gas flush system, corrosive gas and special gas, gas manifold system and test equipment

Specifications:

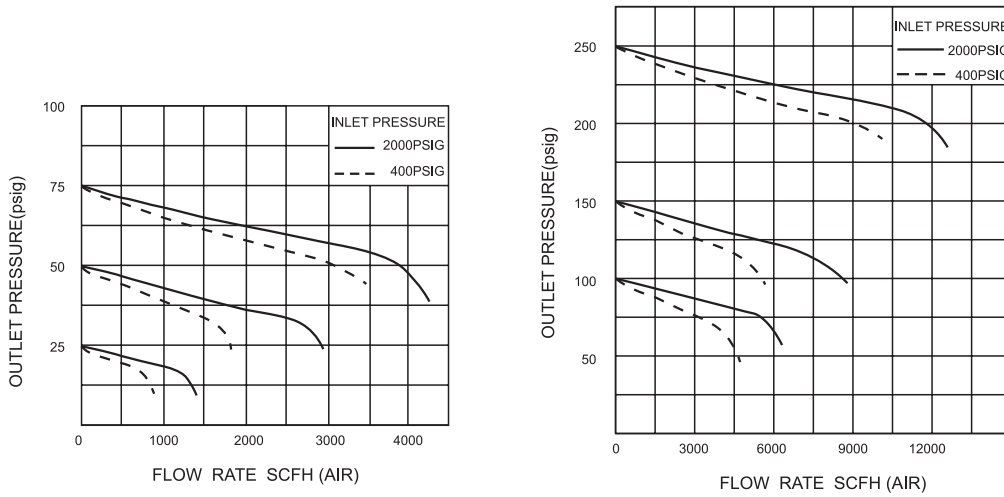
Maximum input pressure: 500, 3000psi
Output pressure: 0-25, 0-50, 0-100, 0-125, 0-250psi
Proof pressure: 1.5 times of maximum rated pressure
Working temperature: -40 + 165 deg F (-40 +74 deg C)
Inboard leakage: 2×10^{-8} atm cc/sec He
Flow capacity: Cv = 1.1

Material:

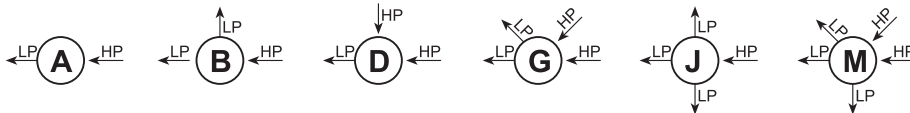
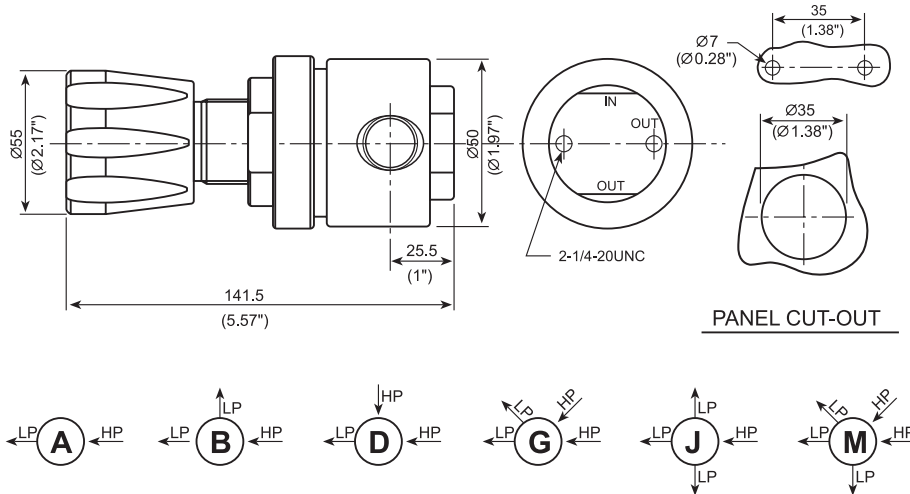
Body: SS 316L, Brass
Cover: SS 316L, Brass
Diaphragm: SS 316L
Filter mesh: SS 316L (10um)
Seat: PCTFE, PTFE
Spring: SS 316L
Poppet: SS 316L
Net weight: 1.6 kgs



FLOW DATA



DIMENSIONS



ORDERING INFORMATION

Series	Body	Port	Input pressure	output pressure	Pressure gauge	Inlet port	Outlet port	Option
PR02	L:316L B:Brass	A B D G J M	D:3000psig F:500psig	F:0~500psig G:0~250psig I:0~100psig K:0~50psig L:0~25psig	M: gauge(Mpa) P: gauge(psi/bar) N: no gauge	03F:3/8"NPT(F) 03M:3/8"NPT(M) 04F:1/2"NPT(F) 04M:1/2"NPT(M) 03T:3/8" Ferrule fitting 04T:1/2" Ferrule fitting	03F:3/8"NPT(F) 03M:3/8"NPT(M) 04F:1/2"NPT(F) 04M:1/2"NPT(M) 03T:3/8" Ferrule fitting 04T:1/2" Ferrule fitting	P: Panel mount S: Safety valve N: Needle valve

PR03 SERIES PRESSURE REGULATOR

PR03 series stainless steel pressure regulator has single stage diaphragm pressure reducing structure, pressure delivered by stainless steel diaphragm, constant outlet pressure, suitable for high flow rate gas system. suitable for purified gas, standard gas, corrosive gas etc.

Design features:

- * Single stage pressure reducing structure
- * Metal to metal diaphragm seal
- * Body inlet port: 3/4"NPT Female and outlet port: 1/4"NPT Female
- * Easy to clean structure
- * Filter mesh inside
- * Panel mount or wall mount

TYPICAL APPLICATIONS:

Gas flush system, special gas, gas manifold system and petrochemical industry

Specifications:

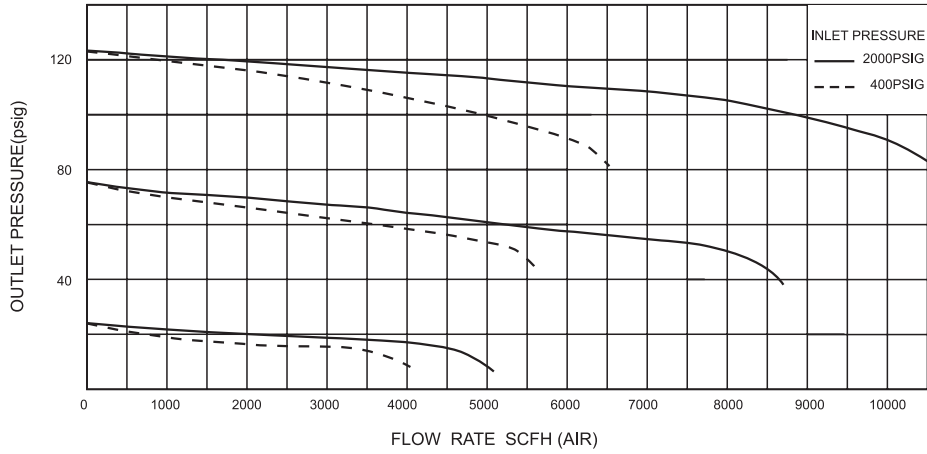
Maximum input pressure: 500, 1500psi
Output pressure: 0-15, 0-25, 0-75, 0-125psi
Proof pressure: 1.5 times of maximum rated pressure
Working temperature: -40 + 165 deg F (-40 +74 deg C)
Inboard leakage: 2×10^{-8} atm cc/sec He
Flow capacity: Cv = 1.8

Material:

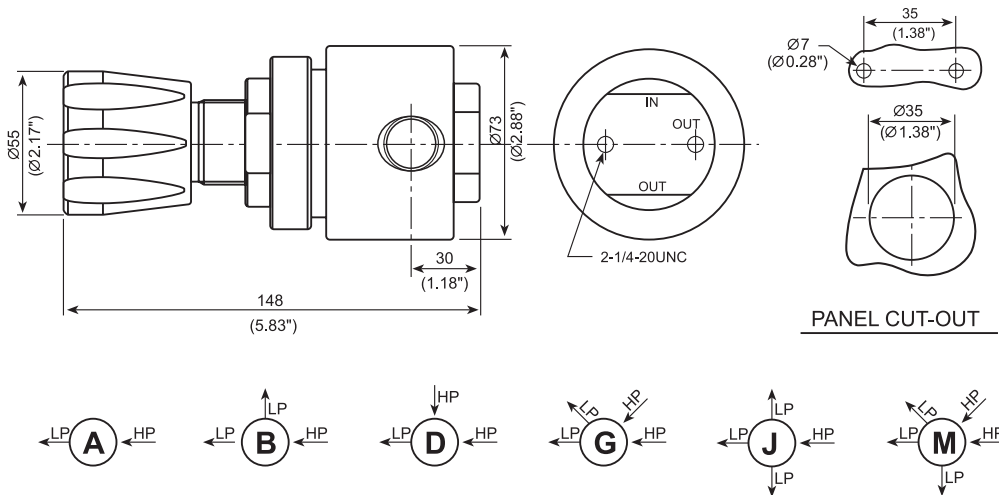
Body: SS 316L, Brass
Cover: SS 316L, Brass
Diaphragm: SS 316L
Filter mesh: SS 316L (10um)
Seat: PCTFE, PTFE
Spring: SS 316L
Poppet: SS 316L
Net weight: 2.7 kgs



FLOW DATA



DIMENSIONS



ORDERING INFORMATION

Series	Body	Port	Input pressure	output pressure	Pressure gauge	Inlet port	Outlet port	Option
PR03	L:316L B:Brass	A B D G J M	E:1500psig F:500psig	H:0~125psig J:0~75psig L:0~25psig M:0~15psig	M: gauge(Mpa) P: gauge(psi/bar) N: no gauge	04F:1/2"NPT(F) 04M:1/2"NPT(M) 06F:3/4"NPT(F) 04T:1/2" Ferrule fitting 06T:3/4" Ferrule fitting	04F:1/2"NPT(F) 04M:1/2"NPT(M) 06F:3/4"NPT(F) 04T:1/2" Ferrule fitting 06T:3/4" Ferrule fitting	P: Panel mount S: Safety valve N: Needle valve

PR11 SERIES PRESSURE REGULATOR

PR11 series stainless steel pressure regulator has piston pressure reducing structure, constant outlet pressure, mainly used for high input pressure, maximum pressure to 6000psi, suitable for purified gas, standard gas, corrosive gas etc.

Design features:

- * Piston structure pressure reducing structure
- * Body inlet port: 1/4"NPT Female
- * Easy to clean structure
- * Filter mesh inside
- * Panel mount or wall mount

TYPICAL APPLICATIONS:

Lab, gas analysis and test, process control, gas manifold system and test equipment

Specifications:

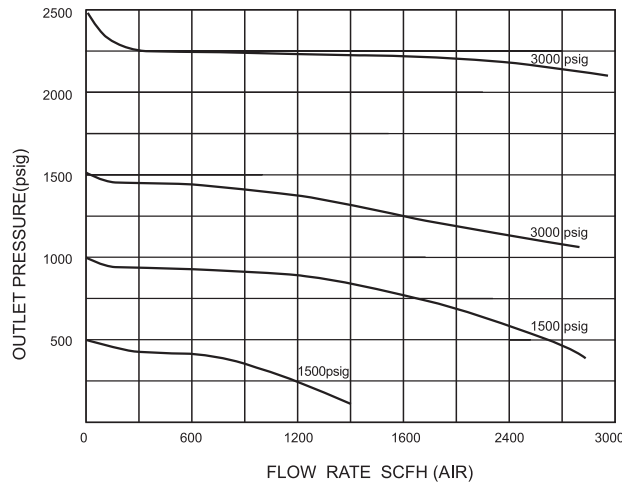
Maximum input pressure: 3000, 6000psi
Output pressure: 0-250, 0-500, 0-1500, 0-3000psi
Proof pressure: 1.5 times of maximum rated pressure
Working temperature: -10 + 165 deg F (-23 +74 deg C)
Inboard leakage test: Bubble testing
Flow capacity: Cv = 0.06

Material:

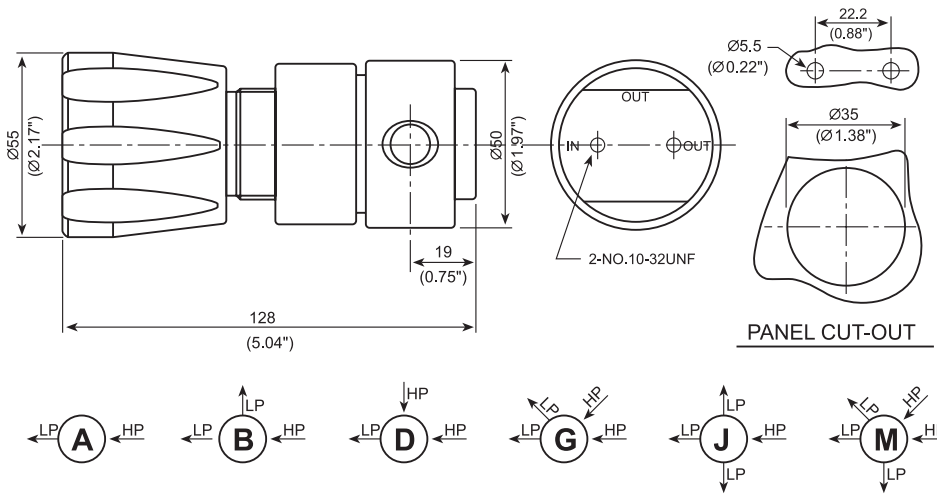
Body: SS 316L
Cover: SS 316L
Filter mesh: SS 316L (10um)
Seat: PCTFE, PTFE
Spring: SS 316L
Poppet: SS 316L
O-ring: viton
Net weight: 0.9 kgs



FLOW DATA



DIMENSIONS



ORDERING INFORMATION

Series	Body	Port	Input pressure	output pressure	Pressure gauge	Inlet port	Outlet port	Option
PR11	L:316L	A B D G J M	B:6000psig D:3000psig	D:0~3000psig E:0~1500psig F:0~500psig G:0~250psig	M: gauge(Mpa) P: gauge(psi/bar) N: no gauge	02F:1/4"NPT(F) 02M:1/4"NPT(M) 01T:1/8" Ferrule fitting 02T:1/4" Ferrule fitting 03T:3/8" Ferrule fitting 6T:6mm Ferrule fitting 8T:8mm Ferrule fitting	02F:1/4"NPT(F) 02M:1/4"NPT(M) 01T:1/8" Ferrule fitting 02T:1/4" Ferrule fitting 03T:3/8" Ferrule fitting 6T:6mm Ferrule fitting 8T:8mm Ferrule fitting	P: Panel mount S: Safety valve N: Needle valve

PR21 SERIES PRESSURE REGULATOR

PR21 series stainless steel pressure regulator has single stage diaphragm pressure reducing structure, constant outlet pressure, suitable for high flow rate gas system. suitable for purified gas, standard gas, corrosive gas etc.

Design features:

- * Single stage pressure reducing structure
- * Diaphragm: PTFE and Neoprene double-layer structure
- * Body inlet port: 1/4"NPT Female
- * Easy to clean structure
- * Filter mesh inside
- * Panel mount or wall mount

TYPICAL APPLICATIONS:

Laboratory, Gas Chromatograph, gas manifold system, petroleum chemistry, and test equipment

Specifications:

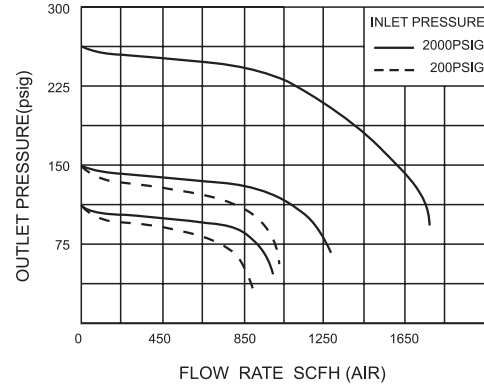
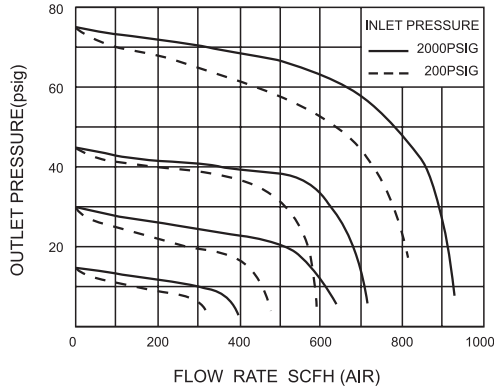
Maximum input pressure: 500, 1500, 3000psi
Output pressure: 0-15, 0-25, 0-50, 0-100, 0-250psi
Proof pressure: 1.5 times of maximum rated pressure
Working temperature: -20 + 150 deg F (-29 +66 deg C)
Inboard leakage test: bubble testing
Flow capacity: Cv = 0.15

Material:

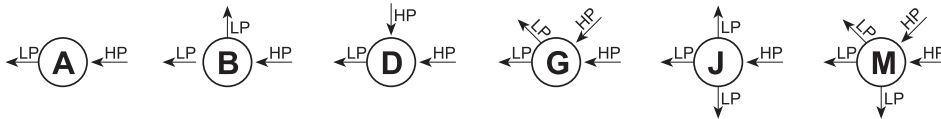
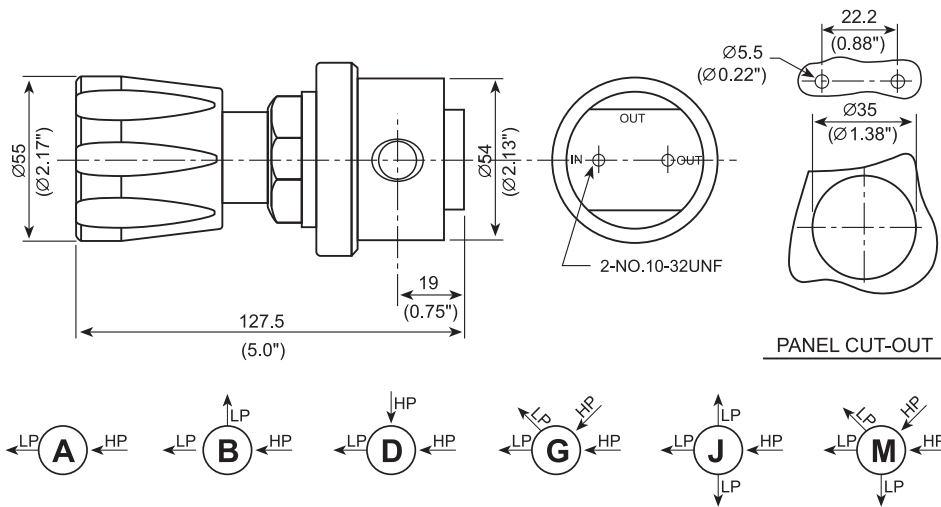
Body: SS 316L, Brass
Cover: SS 316L, Brass
Diaphragm: PTFE and Neoprene
Filter mesh: SS 316L (10um)
Seat: PCTFE, PTFE
Spring: SS 316L
Poppet: SS 316L
Net weight: 1.5 kgs



FLOW DATA



DIMENSIONS



ORDERING INFORMATION

Series	Body	Port	Input pressure	output pressure	Pressure gauge	Inlet port	Outlet port	Option
PR21	L:316L S:304 B:Brass	A B D G J M	D:3000psig E:1500psig F:500psig	G:0~250psig I:0~100psig K:0~50psig L:0~25psig M:0~15psig	M: gauge(Mpa) P: gauge(psi/bar) N: no gauge	02F:1/4"NPT(F) 02M:1/4"NPT(M) 23:CGA330 24:CGA350 27:CGA580 28:CGA660 30:CGA590 52:G5/8"-RH(F) 63:W21.8-14RH(F) 64:W21.8-14LH(F)	02F:1/4"NPT(F) 02M:1/4"NPT(M) 01T:1/8" Ferrule fitting 02T:1/4" Ferrule fitting 03T:3/8" Ferrule fitting 06T:6mm Ferrule fitting 08T:8mm Ferrule fitting	P: Panel mount S: Safety valve N: Needle valve

PR31 SERIES PRESSURE REGULATOR

PR31 series stainless steel pressure regulator has single stage diaphragm pressure reducing structure, constant outlet pressure, suitable for high flow rate gas system. suitable for purified gas, standard gas, corrosive gas etc

Design features:

- * Single stage pressure reducing structure
- * Diaphragm: Nylon and NBR double-layer structure
- * Body inlet port: 1"NPT Female and outlet port: 1/4"NPT Female
- * Easy to clean structure
- * Filter mesh inside
- * Panel mount or wall mount

TYPICAL APPLICATIONS:

Gas manifold system, petrochemical industry and test equipment

Specifications:

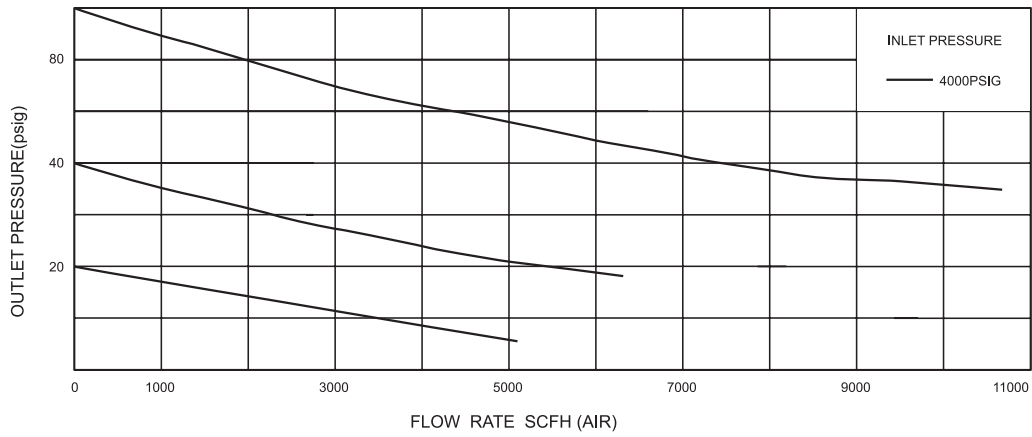
Maximum input pressure: 500psi
Output pressure: 0-25, 0-50, 0-100, 0-125, 0-250psi
Proof pressure: 1.5 times of maximum rated pressure
Working temperature: -10 + 250 deg F (-23 +121 deg C)
Inboard leakage test: bubble testing
Flow capacity: Cv = 5.1

Material:

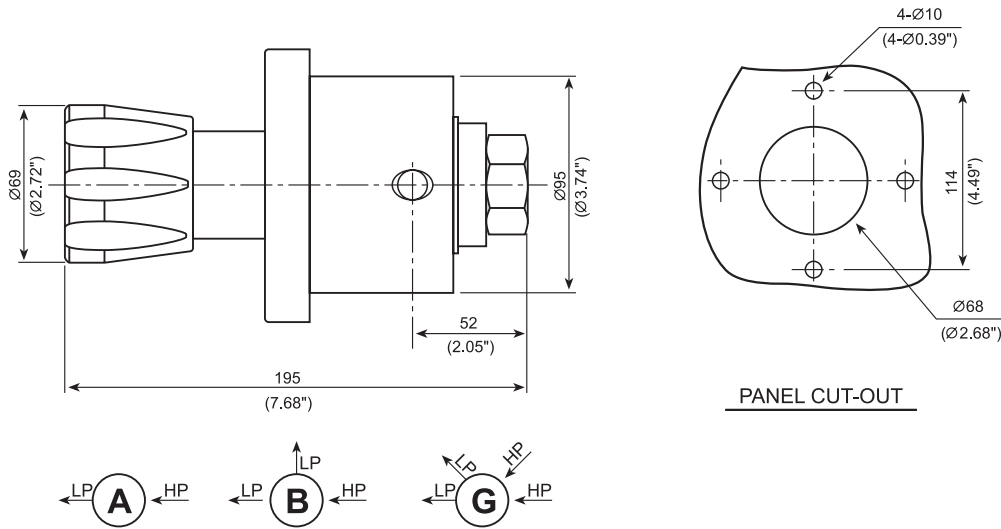
Body: SS 316L, Brass
Cover: SS 316L, Brass
Diaphragm: NBR, coated with nylon
Filter mesh: SS 316L (10um)
Seat: NBR
Spring: SS 316L
Poppet: SS 316L
Net weight: 6 kgs



FLOW DATA



DIMENSIONS



ORDERING INFORMATION

Series	Body	Port	Input pressure	output pressure	Pressure gauge	Inlet port	Oulet port	Option
PR31	L:316L B:Brass	A B G	F:500psig	G:0~250psig H:0~125psig I:0~100psig K:0~50psig L:0~25psig	M: gauge(Mpa) P: gauge(psi/bar) N: no gauge	06F:3/4"NPT(F) 06M:3/4"NPT(M) 08F:1"NPT(F) 08M:1"NPT(M)	06F:3/4"NPT(F) 06M:3/4"NPT(M) 08F:1"NPT(F) 08M:1"NPT(M)	P: Panel mount S: Safety valve N: Needle valve

PR41 SERIES PRESSURE REGULATOR

PR41 series stainless steel pressure regulator has single stage diaphragm pressure reducing structure, pressure delivered by stainless steel diaphragm, accuracy reading, constant outlet pressure, suitable for purified gas, standard gas, corrosive gas etc.

Design features:

- * Single stage pressure reducing structure
- * Metal to metal diaphragm seal
- * Body inlet and outlet port: 1/4"NPT Female
- * Easy to clean structure
- * Panel mount or wall mount

TYPICAL APPLICATIONS:

Laboratory, gas analysis, process control and petroleum chemistry

Specifications:

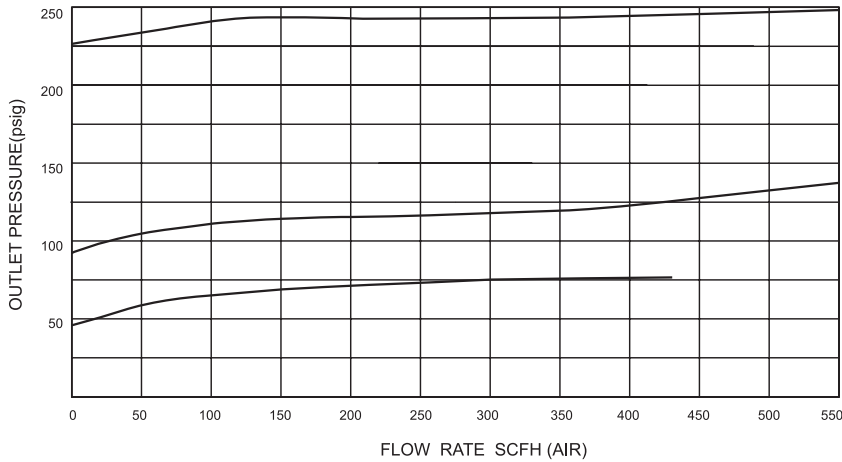
Maximum input pressure: 250psi
Output pressure: 0-25, 0-50, 0-100, 0-250psi
Proof pressure: 1.5 times of maximum rated pressure
Working temperature: -40 + 165 deg F (-40 +74 deg C)
Inboard leakage: 2×10^{-8} atm cc/sec He
Flow capacity: $C_v = 0.08$

Material:

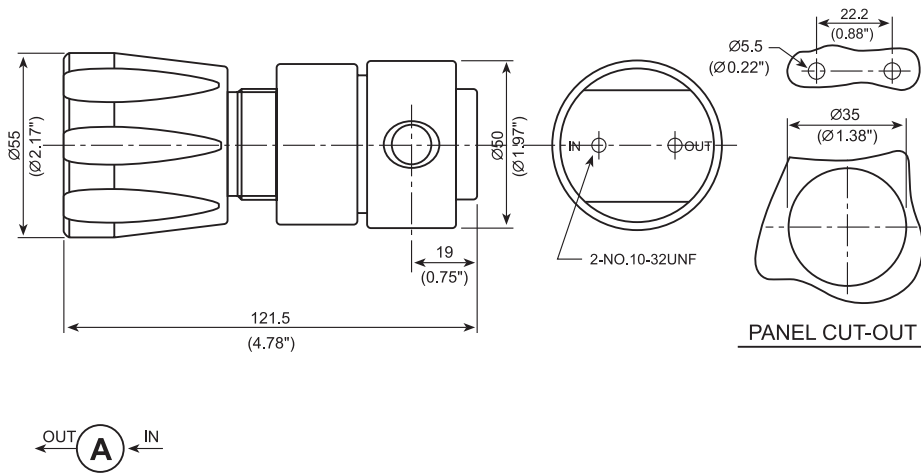
Body: SS 316L, Brass
Cover: SS 316L, Brass
Diaphragm: SS 316L
Seat: PCTFE, PTFE
Spring: SS 316L
Poppet: SS 316L
Net weight: 0.9 kgs



FLOW DATA



DIMENSIONS



ORDERING INFORMATION

Series	Body	Port	Input pressure	output pressure	Pressure gauge	Inlet port	Outlet port	Option
PR41	L:316L B:Brass	A	F:500psig	G:250psig I:100psig K:50psig L:25psig	M: gauge(Mpa) P: gauge(psi/bar) N: no gauge	02F:1/4"NPT(F) 02M:1/4"NPT(M) 01T:1/8" Ferrule fitting 02T:1/4" Ferrule fitting 03T:3/8" Ferrule fitting	02F:1/4"NPT(F) 02M:1/4"NPT(M) 01T:1/8" Ferrule fitting 02T:1/4" Ferrule fitting 03T:3/8" Ferrule fitting	P: Panel mount

PR51 SERIES PRESSURE REGULATOR

PR51 series stainless steel pressure regulator has double stage diaphragm pressure reducing structure, constant outlet pressure, suitable for purified gas, standard gas, corrosive gas etc.

Design features:

- * Body with six port design
- * Double stage pressure reducing structure
- * Metal to metal diaphragm seal
- * Body inlet and outlet port: 1/4"NPT Female
- * Easy to clean structure
- * Filter mesh inside
- * Panel mount or wall mount
- * Outlet with needle valve or diaphragm valve for option

TYPICAL APPLICATIONS:

Laboratory, Gas Chromatograph, gas laser, gas manifold system, petroleum chemistry, and test equipment



Specifications:

Maximum input pressure: 2200, 3000psi

Output pressure: 0-25, 0-50, 0-100, 0-250, 0-500psi

Proof pressure: 1.5 times of maximum rated pressure

Working temperature: -40 + 165 deg F (-40 +74 deg C)

Inboard leakage: 2×10^{-8} atm cc/sec He, at 1500psi input pressure

Outboard leakage: 2×10^{-8} atm cc/sec He, at 1000psi input pressure

Flow capacity: Cv = 0.06

Material:

Body: SS 316L

Cover: SS 316L

Diaphragm: SS 316L

Filter mesh: SS 316L (10um)

Seat: PCTFE, PTFE

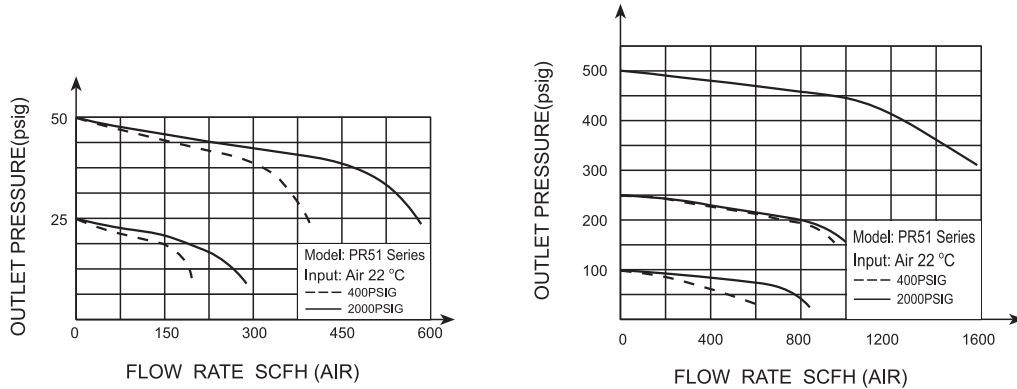
Spring: SS 316L

Poppet: SS 316L

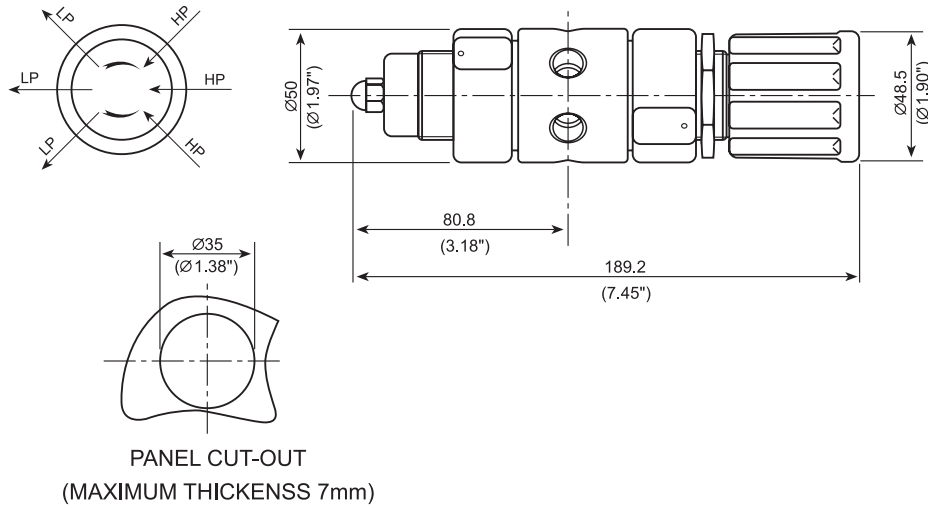
Pressure gauge (wetted part) SS 316L

Net weight: 1.83 kgs

FLOW DATA



DIMENSIONS



ORDERING INFORMATION

Series	SEAT	Input pressure	output pressure	Pressure gauge	Inlet port	Oulet port	Option
PR51	K:PCTFE V:Vespel	D:3000psig E:2200psig (15 MPa)	F:0~500psig G:0~250psig I:0~100psig K:0~50psig L:0~25psig Q:30"Hg Vac-30psig S:30"Hg Vac-100psig T:30"Hg Vac-200psig	M: gauge(Mpa) P: gauge(psi/bar) N: no gauge	02F:1/4"NPT(F) 02M:1/4"NPT(M) 23:CGA330 24:CGA350 27:CGA580 28:CGA660 30:CGA590 52:G5/8"-RH(F) 63:W21.8-14RH(F) 52:W21.8-14LH(F)	02F:1/4"NPT(F) 02M:1/4"NPT(M) 01T:1/8" Ferrule fitting 02T:1/4" Ferrule fitting 03T:3/8" Ferrule fitting 6T:6mm Ferrule fitting 8T:8mm Ferrule fitting	P: Panel mount S: Safety valve N: Needle valve D:Diaphragm valve