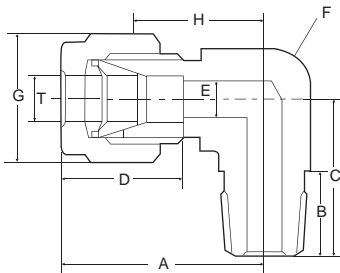
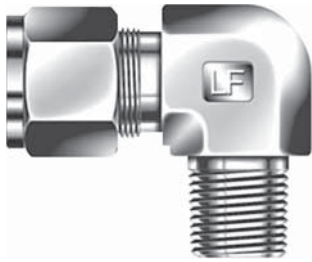


ME



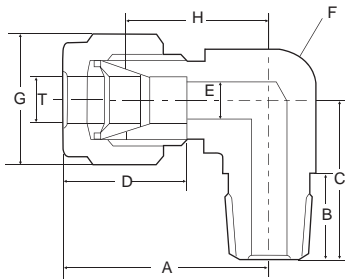
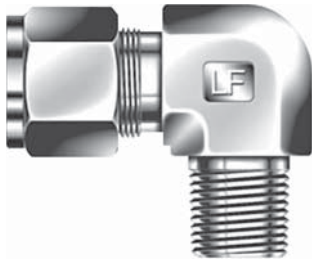
### MALE ELBOW (METRIC)

T TUBE O.D.	PT-NPT MALE PIPE SIZE	CATALOG NUMBER	A	B	C	D	E	F	G	H	N.W.(G)
3	1/8	ME-3-1	25.4	10	19.8	13	2.4	12	12	18.8	
3	1/4	ME-3-2	26.6	13	24.0	13	2.4	14	12	20.0	
4	1/8	ME-4-1	25.4	10	19.1	13.7	3	12	12	18.8	28.89
4	1/4	ME-4-2	26.6	13	22.2	13.7	3	14	12	20.0	46.09
4	3/8	ME-4-3	28.4	14	26.0	13.7	3	17	12	21.8	
4	1/2	ME-4-4	31.3	17	31.0	13.7	3	22	12	24.7	
6	1/8	ME-6-1	27.0	10	19.1	15.3	5	12	14	19.6	32.8
6	1/4	ME-6-2	27.0	13	22.2	15.3	5	14	14	19.6	47.6
6	3/8	ME-6-3	29.8	14	26.0	15.3	5	17	14	22.4	72.2
6	1/2	ME-6-4	31.8	17	31.0	15.3	5	22	14	24.4	137.5
8	1/8	ME-8-1	28.8	10	20.1	16.2	6	14	17	21.3	47.5
8	1/4	ME-8-2	28.8	13	23.2	16.2	6	14	17	21.3	52.2
8	3/8	ME-8-3	30.6	14	26.0	16.2	6	17	17	23.1	76
8	1/2	ME-8-4	32.6	17	31.0	16.2	6	22	17	25.1	130.4
10	1/8	ME-10-1	31.5	10	21.9	17.2	6	17	19	23.9	73.8
10	1/4	ME-10-2	31.5	13	25.0	17.2	8	17	19	23.9	80.4
10	3/8	ME-10-3	31.5	14	26.0	17.2	8	17	19	23.9	82.2
10	1/2	ME-10-4	33.5	17	31.0	17.2	8	22	19	25.9	137.4
12	1/8	ME-12-1	36.0	10	25.7	22.8	10	22	22	25.9	100.9
12	1/4	ME-12-2	36.0	13	27.0	22.8	10	22	22	25.9	109.1
12	3/8	ME-12-3	36.0	14	28.0	22.8	10	22	22	25.9	108.2
12	1/2	ME-12-4	36.0	17	31.0	22.8	10	22	22	25.9	148
12	3/4	ME-12-6	39.8	19	26.8	22.8	10	27	22	29.7	253.8
12	1	ME-12-8	45.3	22	45.2	22.8	10	34	22	35.2	
14	3/8	ME-14-3	38.0	14	29.0	24.4	10	24	27	27.9	162.6
14	1/2	ME-14-4	38.0	17	33.1	24.4	10	24	27	27.9	180.1
14	3/4	ME-14-6	39.8	19	36.8	24.4	10	27	27	29.7	
15	3/8	ME-15-3	38.0	14	29.0	24.4	11	24	27	27.9	
15	1/2	ME-15-4	38.0	17	33.1	24.4	11	24	27	27.9	
15	3/4	ME-15-6	39.8	19	36.8	24.4	11	27	27	29.7	
16	3/8	ME-16-3	38.0	14	29.0	24.4	12	24	27	27.9	153
16	1/2	ME-16-4	38.0	17	33.1	24.4	12	24	27	27.9	165.5
16	3/4	ME-16-6	39.8	19	36.8	24.4	12	27	27	29.7	261.6
18	3/8	ME-18-3	39.8	14	32.5	24.4	14	27	30	29.7	
18	1/2	ME-18-4	39.8	17	34.8	24.4	14	27	30	29.7	
18	3/4	ME-18-6	39.8	19	36.8	24.4	14	27	30	29.7	268.5
20	1/2	ME-20-4	44.6	17	39.7	26.0	16	30	32	34.5	250.3
20	3/4	ME-20-6	44.6	19	41.7	26.0	16	30	32	34.5	
22	1/2	ME-22-4	44.6	17	39.7	26.0	18	30	32	34.5	
22	3/4	ME-22-6	44.6	19	41.7	26.0	18	30	32	34.5	
22	1	ME-22-8	44.6	22	44.5	26.0	18	34	32	34.5	
25	1/2	ME-25-4	49.1	17	39.7	31.3	21	34	38	36.8	
25	3/4	ME-25-6	49.1	19	41.7	31.3	21	34	38	36.8	
25	1	ME-25-8	49.1	22	44.5	31.3	21	34	38	36.8	

All dimensions are in millimeters unless otherwise specified, only for reference subject to change.

MALE ELBOW  
(FRACTIONAL)

ME



T TUBE O.D.	PT-NPT MALE PIPE SIZE	CATALOG NUMBER	A	B	C	D	E	F	G	H	N.W.(G)
1/16	1/8	ME-005-1	19.1	10	18.1	8.6	1	10	10	15.2	28.78
1/16	1/4	ME-005-2	21.8	13	21.6	8.6	1	14	10	18.0	
1/8	1/8	ME-01-1	23.6	10	18.1	12.7	3	12	10	17.0	31.64
1/8	1/4	ME-01-2	24.6	13	22.2	12.7	3	14	10	18.0	48.14
1/8	3/8	ME-01-3	28.4	14	26.8	12.7	3	17	10	21.8	
1/8	1/2	ME-01-4	31.3	17	32.7	12.7	3	22	10	24.7	
3/16	1/8	ME-015-1	25.4	10	19.1	13.7	3	12	12	18.8	
3/16	1/4	ME-015-2	25.4	13	22.2	13.7	3	14	12	18.6	
1/4	1/8	ME-02-1	27.0	10	19.1	15.3	5	12	14	19.6	32.1
1/4	1/4	ME-02-2	27.0	13	22.2	15.3	5	14	14	19.6	49.4
1/4	3/8	ME-02-3	29.7	14	26.0	15.3	5	17	14	22.4	72.6
1/4	1/2	ME-02-4	31.8	17	31.0	15.3	5	22	14	24.4	128
3/8	1/8	ME-03-1	30.5	10	21.1	16.8	6	17	17	21.3	43.6
3/8	1/4	ME-03-2	30.5	13	24.2	16.8	8	17	17	21.3	51.1
3/8	3/8	ME-03-3	31.2	14	26.0	16.8	8	17	17	23.1	77
3/8	1/2	ME-03-4	33.3	17	31.0	16.8	8	22	17	26.0	134.1
1/2	1/8	ME-04-1	36.1	10	25.7	22.8	10	22	22	26.0	102.3
1/2	1/4	ME-04-2	36.1	13	27.0	22.8	10	22	22	26.0	101.5
1/2	3/8	ME-04-3	36.1	14	29.0	22.8	10	22	22	26.0	109.9
1/2	1/2	ME-04-4	36.1	17	31.0	22.8	10	22	22	26.0	148.4
1/2	3/4	ME-04-6	40.0	19	36.8	22.8	10	27	22	29.7	255.1
1/2	1	ME-04-8	45.3	22	45.2	22.8	10	34	22	35.2	
5/8	3/8	ME-05-3	38.1	14	30.0	24.4	12	23	27	27.9	150.6
5/8	1/2	ME-05-4	38.1	17	33.1	24.4	12	24	27	27.9	165.9
5/8	3/4	ME-05-6	40.0	19	36.8	24.4	12	24	27	29.7	
3/4	1/2	ME-06-4	40.0	17	34.8	24.4	15	27	30	29.7	266.3
3/4	3/4	ME-06-6	40.5	19	36.8	24.4	15	27	30	29.7	230.7
1	3/4	ME-08-3	49.0	19	41.7	31.3	21	34	38	36.8	
1	1	ME-08-8	49.0	22	44.5	31.3	21	34	38	36.8	388.9

All dimensions are in millimeters unless otherwise specified, only for reference subject to change.