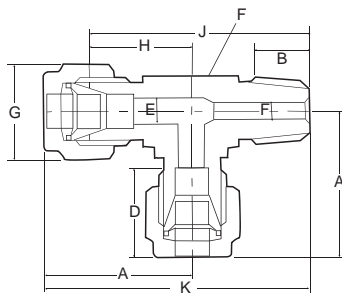
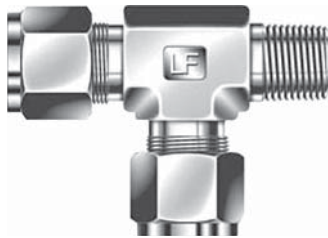


MALE RUN TEE  
(METRIC)

MRT



T TUBE O.D.	PT-NPT MALE PIPE SIZE	CATALOG NUMBER	A	B	D	E	F	G	H	J	K	N.W.(G)
4	1/8	MRT-4-1	25.4	10	15.3	3	12	12	18.8	37.9	44.5	
4	1/4	MRT-4-2	25.4	13	15.3	3	14	12	18.8	41.0	47.6	
6	1/8	MRT-6-1	27.0	10	15.3	5	12	14	19.6	38.7	46.1	
6	1/4	MRT-6-2	27.0	13	15.3	5	14	14	19.6	41.8	49.2	72.1
6	3/8	MRT-6-3	29.8	14	15.3	5	17	14	22.4	48.4	55.8	
6	1/2	MRT-6-4	31.8	17	15.3	5	22	14	24.4	55.4	62.8	
8	1/8	MRT-8-1	28.8	10	16.2	6	14	17	21.3	41.4	48.9	
8	1/4	MRT-8-2	28.8	13	16.2	6	14	17	21.3	46.3	52.0	76.7
8	3/8	MRT-8-3	28.8	14	16.2	6	17	17	21.3	49.1	54.8	106.6
8	1/2	MRT-8-4	30.6	17	16.2	6	22	17	25.1	56.1	61.6	
10	1/8	MRT-10-1	31.5	10	17.2	8	17	19	23.9	45.8	53.4	
10	1/4	MRT-10-2	31.5	13	17.2	8	17	19	23.9	48.9	56.5	114.4
10	3/8	MRT-10-3	31.5	14	17.2	8	17	19	23.9	49.9	57.5	117.5
10	1/2	MRT-10-4	33.5	17	17.2	8	22	19	25.9	56.9	64.5	
12	1/8	MRT-12-1	36.0	10	22.8	10	22	22	25.9	51.6	61.7	
12	1/4	MRT-12-2	36.0	13	22.8	10	22	22	25.9	52.9	63.0	
12	3/8	MRT-12-3	36.0	14	22.8	10	22	22	25.9	53.9	64.0	156.7
12	1/2	MRT-12-4	36.0	17	22.8	10	22	22	25.9	56.9	67.0	
12	3/4	MRT-12-6	39.8	19	22.8	10	27	22	29.7	66.9	76.6	
12	1	MRT-12-8	45.3	22	22.8	10	34	22	35.2	80.4	90.5	
14	3/8	MRT-14-3	38.0	14	24.4	10	24	27	27.9	56.9	67.0	
14	1/2	MRT-14-4	38.0	17	24.4	10	24	27	27.9	61.0	71.1	
14	3/4	MRT-14-6	39.8	19	24.4	10	27	27	29.7	66.5	76.6	
15	3/8	MRT-15-3	38.0	14	24.4	10	24	27	27.9	56.9	67.0	
15	1/2	MRT-15-4	38.0	17	24.4	10	24	27	27.9	61.0	71.1	
15	3/4	MRT-15-6	39.8	19	24.4	10	27	27	29.7	66.5	76.6	
16	3/8	MRT-16-3	38.0	14	24.4	12	24	27	27.9	56.9	67.0	
16	1/2	MRT-16-4	38.0	17	24.4	12	24	27	27.9	61.0	71.1	
16	3/4	MRT-16-6	39.8	19	24.4	12	27	27	29.7	66.5	76.6	
18	3/8	MRT-18-3	39.8	14	24.4	14	27	30	29.7	62.2	72.3	
18	1/2	MRT-18-4	39.8	17	24.4	14	27	30	29.7	64.5	74.6	
18	3/4	MRT-18-6	39.8	19	24.4	14	27	30	29.7	66.5	76.6	
20	1/2	MRT-20-4	44.6	17	26.0	16	30	32	34.5	74.2	84.3	
20	3/4	MRT-20-6	44.6	19	26.0	16	30	32	34.5	76.2	96.3	
22	1/2	MRT-22-4	44.6	17	26.0	18	30	32	34.5	74.2	84.3	
22	3/4	MRT-22-6	44.6	19	26.0	18	30	32	34.5	76.2	86.3	
25	1/2	MRT-25-4	49.1	17	31.3	21	34	38	36.8	76.5	88.8	
25	3/4	MRT-25-6	49.1	19	31.3	21	34	38	36.8	78.5	90.8	
25	1	MRT-25-8	49.1	22	31.3	21	34	38	36.8	81.3	93.6	

(FRACTIONAL)

1/8	1/8	MRT-01-1	23.6	10	12.7	3	12	12	17.0	35.1	41.7	
1/8	1/4	MRT-01-2	24.6	13	12.7	3	14	12	18.0	40.2	46.8	
1/4	1/8	MRT-02-1	27.0	10	15.2	5	12	14	19.6	38.7	46.1	
1/4	1/4	MRT-02-2	27.0	13	15.2	5	14	14	19.6	41.8	49.2	69.4
1/4	3/8	MRT-02-3	29.8	14	15.2	5	17	14	22.4	48.4	55.8	
1/4	1/2	MRT-02-4	31.8	17	15.2	5	22	14	24.4	55.4	62.8	
3/8	1/8	MRT-03-1	30.5	11	16.8	8	17	17	21.3	42.4	51.6	
3/8	1/4	MRT-03-2	30.5	13	16.8	8	17	17	21.3	45.5	54.7	72.1
3/8	3/8	MRT-03-3	31.2	14	16.8	8	17	17	23.1	49.1	57.2	
3/8	1/2	MRT-03-4	33.3	17	16.8	8	22	17	26.0	57.0	64.3	155.5
1/2	1/8	MRT-04-1	36.0	11	22.8	10	22	22	25.9	51.6	61.7	
1/2	1/4	MRT-04-2	36.0	13	22.8	10	22	22	25.9	52.9	63.0	
1/2	3/8	MRT-04-3	36.0	14	22.8	10	22	22	25.9	53.9	64.0	
1/2	1/2	MRT-04-4	36.0	17	22.8	10	22	22	25.9	56.9	67.0	200.1
1/2	3/4	MRT-04-6	39.8	19	22.8	10	27	22	29.7	66.5	76.6	
1/2	1	MRT-04-8	45.3	22	22.8	10	34	22	35.2	80.4	90.5	
5/8	3/8	MRT-05-3	38.1	14	24.4	12	24	27	27.9	57.9	68.1	
5/8	1/2	MRT-05-4	38.1	17	24.4	12	24	27	27.9	61.0	71.2	
5/8	3/4	MRT-05-6	40.0	19	24.4	12	27	27	29.7	66.5	76.8	
3/4	1/2	MRT-06-4	40.0	17	24.4	15	27	30	29.7	66.5	76.8	
3/4	3/4	MRT-06-6	40.0	19	24.4	15	34	30	29.7	66.5	76.8	304.9
1	3/4	MRT-08-6	49.1	19	31.3	21	34	38	36.8	78.5	90.8	
1	1	MRT-08-8	49.1	22	31.3	21	34	38	36.8	81.3	93.6	

All dimensions are in millimeters unless otherwise specified, only for reference subject to change.